

JULY 2009

BRIGHT IDEAS

Massive ICE II warehouse is designed for massive energy savings

BetaLED fixtures are natural fit for lighting cold storage warehouse

Innovative Cold Storage Enterprises, Inc. (ICE) opened its second warehouse called ICE II, in San Diego this March. The 132,000-square foot freezer warehouse is designed to save more than \$408,000 annually at current utility prices and uses 62 percent less electricity than standard cold stor-

age facilities. It costs half as much to operate as the old ICE facility yet it can hold four times more product.

The BetaLED total lighting system consumes 76 percent less energy than the originally designed HID system. BetaLED luminaires provide over 150,000 maintenance-free

hours in the minus 20 degree Celsius refrigerated warehouse.

[Read complete case study](#)

Progress Energy Carolinas Reports on LEDway streetlight test

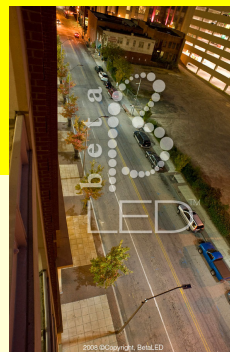
Utility company sees impressive results

Progress Energy Carolinas (PEC) installed nine LED test fixtures in October, 2008 on East Davie Street in downtown Raleigh. Nine Type III (60 LED) LEDway luminaires were retrofitted onto 30 foot poles on a one-for-one replacement of 250-watt high-

pressure sodium (HPS) Cobrahead Type III lamps. PEC has been observing the fixtures for evaluation. Light level (footcandle) readings were taken with the HPS and the LED fixtures and a point-by-point footcandle calculation has been

prepared for the LED system.

[View PEC's technical findings](#)



LEDway Mingles with Mayors from Across the Country

First appearance at the U.S. Conference of Mayors Annual Meeting

BetaLED recently became of a member of the [U.S. Conference of Mayors Business Council](#). A benefit of membership includes access to Mayors and their staff to discuss how LED lighting would be advantageous to their communities.

to present LEDway streetlights at the [77th Annual U.S. Conference of Mayors Annual Meeting](#), June 12-16 in Providence, Rhode Island. The conference included an opportunity for Business Council members to showcase products or services that address the needs of the municipal market.

Approximately 200 Mayors from across the country attended the event to discuss a variety of topics including workforce development, healthcare, energy, and the [American Recovery and Reinvestment Act](#).

In addition, BetaLED was invited



Finding BetaLED Made Easier

To make it easier to search for UL listings, BetaLED is now listed separately under the LED category at [www.ul.com](#). Previously, BetaLED products were listed under the Ruud Lighting name. For UL information about BetaLED-branded fixtures, search for them by company name in UL's online certifications directory at [www.ul.com](#). Click on certifications and key in "betaled" to find category listings and files.



Contest!

Millerbernd – a quality outdoor line known for their robust stainless-steel offerings and other high-end metal work is sponsoring a competition for new custom designs – the winning 5 finalists will receive \$ 500 and royalty opportunity if the design is constructed and the best design will be awarded \$ 1000 plus airfare to Lightfair AND royalties if the fixture is produced in quantity !



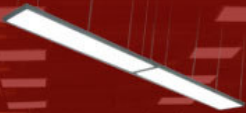
Read the simple rules and limitations on the link and get creative – here is a firm that builds all manner of unique custom fixtures asking for your input – let's see what you can come up with.

LEDALUX® STRATALUX LED Panel Luminaires

The STRATALUX Series is a revolutionary white LED based product designed for both commercial and residential applications. Specifically designed to replace inefficient, mercury-containing fluorescent lay-ins, these fixtures fit directly into standard drop ceilings. They can also be installed into recessed cut-ins, surface mounted or suspended.



STR-0124



STR-0013



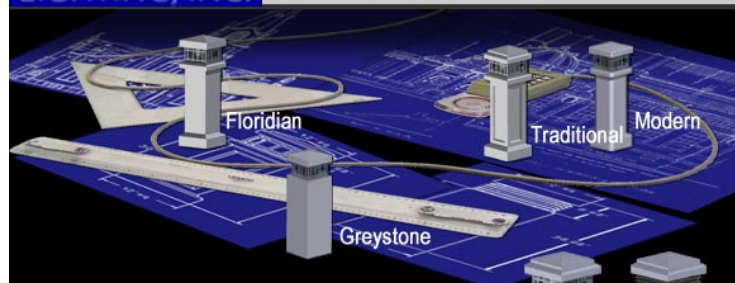
STR-0104



STR-0023

esco LIGHTING, INC.

Introducing... Concrete Bollards



Four Architectural styles
HID or Induction lamps
Louvered or caged

The Choice Is Yours



You Can't Hide From These Sensors!

Dual-technology sensors using PIR and Microphonics™ offer the industry's most reliable occupancy detection method.

[READ MORE BELOW](#)



AcuityBrands.
Controls

iNews

You Can't Hide From These Sensors!

Occupancy sensors, a staple in new construction due to energy code automatic shutoff requirements, can generate 35-45% energy savings in open and private offices, as well as 25% savings in classrooms, according to the [New Buildings Institute](#). Sensors are also heavily used in renovation and retrofit projects to qualify buildings for [EPA Act tax incentives](#). In order for controlled lighting to realize maximum energy savings without negatively impacting occupant convenience, sensors must both initially detect occupants when they enter a space, as well as continue to detect them while they remain in the space.

For applications where occupants and their motions always remain within a sensor's line of site, [passive infrared \(PIR\) technology](#) is regarded as the most reliable detection method. PIR sensors detect changes in the infrared heat energy given off by occupants as they move within the field-of-view. The amount of typical motion, along with a space's size

and shape, will then factor into what particular lens is needed on a PIR sensor.

For detecting occupants in spaces with obstructions that block a PIR sensor's line of sight, such as bathroom stalls or office cubicle areas, a secondary detection technology is required. Referred to as dual technology, the two options within the industry are [Microphonics](#) and Ultrasonic. Of these two, Microphonics detection is superior in that it provides improved and more reliable occupancy detection, requires less power, and is acoustically passive. Unlike Ultrasonic technology, Microphonics transmits no sound waves into a space, thereby eliminating all potential for interference.

Originally patented by [Sensor Switch](#), [Microphonics](#) detection technology uses a microphone inside the sensor to hear sounds indicating occupancy. Referred to as having [Passive Dual Technology \(PDT\)](#), these sensors require occupant motion be seen by the PIR to

initially turn the lights on, after which occupants can either be seen ([via PIR](#)) or heard ([via Microphonics](#)) for the lights to remain on.

[Microphonics](#) is tuned to only detect leading edge noises typical of human activity, (e.g., talking, typing, rustling papers, etc.) and not building noises (e.g., HVAC rumbles or air currents). Additionally, automatic gain control (AGC) is utilized to dynamically self-adapt a sensor to its environment by filtering out constant background noise. Finally, sensors with [Microphonics](#) use advanced digital acoustic filtering. This prevents the prolonged presence of varying noises without any [PIR](#) events, such as leaving a television or radio on, from keeping the lights on. It also filters out sounds with periodicity, such as consistent clicks from a clock.

[Click here](#) to learn more about [Sensor Switch's](#) Passive Dual Technology sensors using Microphonics.

New Catalogs *The following manufacturers have released new literature.*

INCON LIGHTING

PAULUHN
A Federal Signal Company

winona
LIGHTING

Winscape



DECORATIVE & RESIDENTIAL LIGHTING SOLUTIONS

Essential Series Products Launched and Loaded!

The Decorative and Residential Product Value Stream has updated the Essential Series product line. Energy-efficient Globe, Mushroom and Décor Round fixtures are offered in White, Bronze and Polished Brushed Nickel finishes, and they look great compared to their incandescent counterparts. They provide even illumination with a 2700K 55 watt 2C type lamp in the Décor Rounds and a 2700K GU-24 spiral integrated lamp/ballast in the Globes and Mushrooms.

These fixtures are Energy Star® certified and Title 24 compliant. They include a 10,000 hour average lamp for long life which saves maintenance time and the cost of replacing lamps.

Décor Round



Mushroom



Globe

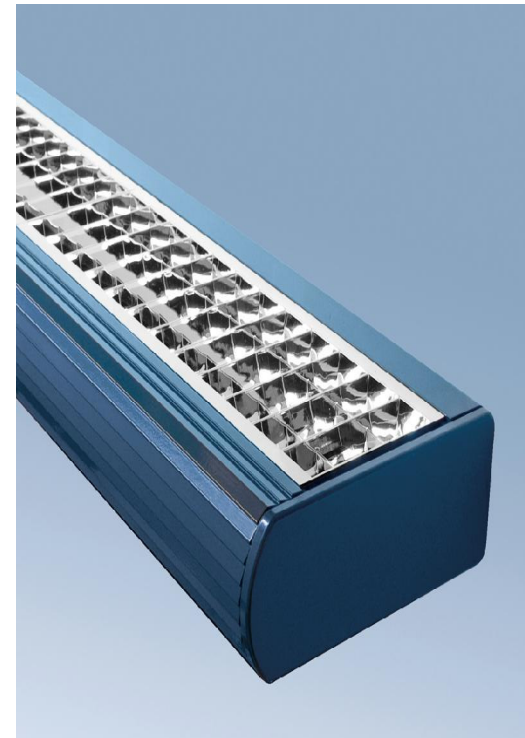


TAMBIENT®

green in any color™

Elliptipar is thrilled to announce that Tambient's Tambour lighting solution for work environments was awarded an **Innovation Award for Workplace Productivity from Buildings Magazine** during NeoCon's World Trade Fair last week in Chicago.

Tambient is the lighting industry's only product that delivers both task and ambient lighting from a single lamp, illuminating offices at .6 watts per square foot, thus cutting energy bills and contributing to LEED credits. Tambient's Tambour solution received a **Citation of Excellence** (one of three companies) in the Workplace Productivity category and the three finalists from each category (that received a "Citation of Excellence") were viewed on-site during NeoCon. Tambour was selected as the Grand Prize Winner and awarded the Innovation award in the Workplace Productivity category.





New **g** Product

GOTHAM ARCHITECTURAL DOWNLIGHTING
A DIVISION OF ACUTY BRANDS LIGHTING, INC.
1400 Lester Rd. Conyers, Georgia 30012
P 800 315 4982 F 770 860 3129
www.gothamlighting.com

Improved CFL Wallwash Performance

In the spirit of continuous improvement, Gotham has refined the performance of its 6- and 8-inch horizontal and vertical CFL wallwash luminaires, providing the lighting professional with the most uniform, best performing open CFL wallwash in the industry.

By utilizing a very diffuse, highly reflective kicker surface, hot spots and striations on the wall have been eliminated. The inner finishing cone has been designed to eliminate room-side flash and unwanted scallops often associated with poorly designed wallwash luminaires.




SPI LIGHTING INC.
classic outdoor lighting

Meet Big Brother! "Ultra Nova"

Brass & Copper Construction.
30 Degree Beam Spread
6 Watts = 50!!
120V.

WARM DRAMATIC COLOR & UNBELIEVABLE POWER

-NO DRIVERS NEEDED
-RETROFIT
-NEW DESIGN / INSTALLATION

50,000 HOUR LAMP LIFE



NEW WET LOCATION LISTING
For
EXISTING VERY HOT PRODUCT!

ALX2-RLR-T5 OR T8-WET

We are very pleased to introduce a new wet listing rating for our very popular rounded lens fixture. Both specifiers and agents have had many requests for an upgraded wet listing since we introduced the "RLR" fixture nearly four years ago and it is now ready to ship. Several very successful installations already in place!

Features are as follows:

- Available in T8, T5 and T5HO
- Single or tandem lamp as cataloged
- Available with multiple or combination of lamps up to 12' in one continuous housing (consult factory)
- Continuous row mounting (consult factory)
- Opal or clear lens
- Gasketed "cup" style end caps
- Integral Electronic ballast
- Satin Anodized, white paint or custom powdercoat finishes
- Ceiling or Wall mount (horizontal or vertical)
- Only Birchwood has one similar!



The DōM™ revolution continues with the new DōM8 (8" aperture) LED downlight!

- High quality light in 1200- and 1500-lumen packages.
- Efficacies of 43 LPW and 42 LPW respectively.
- Robust design for 50,000-hour life.
- Familiar form-factor and installation process with access from below the ceiling.

Defining the shape of LED downlighting, the DōM family offers the most lumen output choices available to customize your lighting solution.



Additional DōM8 Information

DōM8 Specification Sheet

DōM Family Website

Contact Chris Sharp with questions or comments: CSharp@Lithonia.com

www.Lithonia.com/downlighting



New **g** Product

GOTHAM ARCHITECTURAL DOWNLIGHTING
A DIVISION OF ACUITY BRANDS LIGHTING, INC.
1400 Lester Rd. Conyers, Georgia 30012
P 800 315 4982 F 770 860 3129
www.gothamlighting.com

Gotham Lightshield™ Vandal-Resistant Trim Accessory

Gotham's new Lightshield™ is an attractive alternative for those applications that may require a more robust vandal-resistant functionality. Lightshield provides a means for protecting many of Gotham's 6- and 8-inch, high-performance recessed luminaires while complementing a space's architectural details—all without compromising performance or aesthetics.

Lightshield, which will accommodate lens combinations up to one-half inch thick, provides IP55 ingress protection as well as vandal- and tamper-resistance protection in a very rugged, yet very sleek, design. When ordered with a polycarbonate lens, Lightshield comes with a full lifetime warranty protecting against damage incurred from **p h y s i c a l a b u s e .**



Visit www.gothamlighting.com for an updated specification sheet and additional product information.

LITECONTROL

Latitude – LS

The recently released Latitude family is growing with the addition of the Latitude – LS. This T5 or T5HO only fixture is a mere 3" high and 7" wide and provides the separate uplight and downlight chambers in a rectilinear form. The Latitude – L, C and LS are all Cradle to Cradle Silver Certified. For more information on the Latitude - LS and the rest of the family go to litecontrol.com.



Revolutionize Your Design with the New Aura

Aura, the latest addition to the Inde-Pendants line, provides designers with a simple, elegant choice for lighting such spaces as lobbies, reception areas, libraries and cafeterias.

The Aura offers a clean steel rim with a white acrylic lens and is available in three sizes. The Aura is the latest Cradle to Cradle Silver Certified fixture from Litecontrol, allowing a designer's sustainable efforts to include the lighting system. For more information on the Aura and the Inde-Pendants family go to litecontrol.com.

New Products

SD^x High Performance Baffle

Our popular semi-direct SD^x line is expanding to include the new SD^x high performance baffle. The SD^x HPB provides a high performance reflector/baffle combination to give greater depth to the SD^x family. This is the perfect fixture for grocery store aisle applications, engineered to raise light levels on vertical surfaces while saving energy. The entire SD^x line of fixtures is Cradle to Cradle Silver Certified. For more information on the HPB and the other baffle options go to litecontrol.com.

You asked,
we responded!



Two MORE products added to the
5-day QuickShip program.

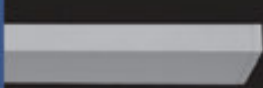


NEW!

Bruno Wall
Indirect

NEW!

Cerra Wall
Indirect/Direct

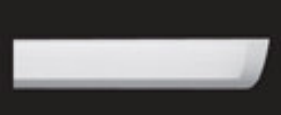


BRUNO WALL

CERRA WALL



CERRA 10



CERRA 7

CERRA WALL



BRUNO

COVE



LIGHTLINE RECESSED

ICETRAY CURVED



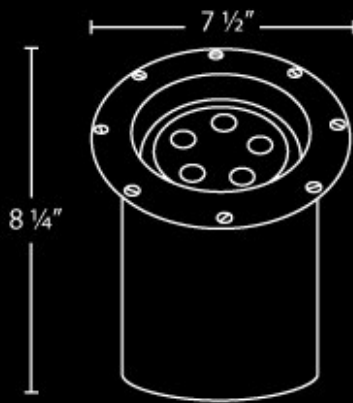
Big Bopper!

Model: Big Bopper
Wattage: 25 Watts

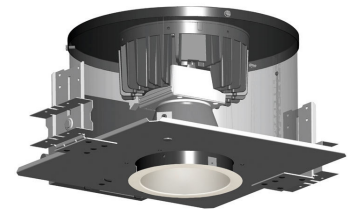
Model: Little Bopper
Wattage: 15 Watts



Electrical: 9-18V or 120V
Color Temperature: 2750k, 3950k, 6000K
Optics: 10, 25, 45 & 80 Degree



New Product



Klopfenstein's Lighting Inc
1128 Nuuanu Ave Suite 101
Honolulu, HI 96817-5119
Phone: 808-533-0558
Sales Fax: 808-526-4085
Quotes Fax: 808-521-2891
E-mail: info@kli-hi.com
www.kli-hi.com

KLI is known as the premiere lighting manufacturer's representative in Hawaii since 1976. In general, we promote our lighting manufacturers through Architects, Engineers and Designers and distribute through wholesale electrical houses.

KLI was originally incorporated in 1976 under the name KLOPFENSTEIN'S and operated out of a house in Hawaii Kai. In December of 1987 we moved our operations into our present location on Nuuanu Ave in Downtown Honolulu. In 1997 we reincorporated as KLOPFENSTEIN'S LIGHTING INC (KLI).